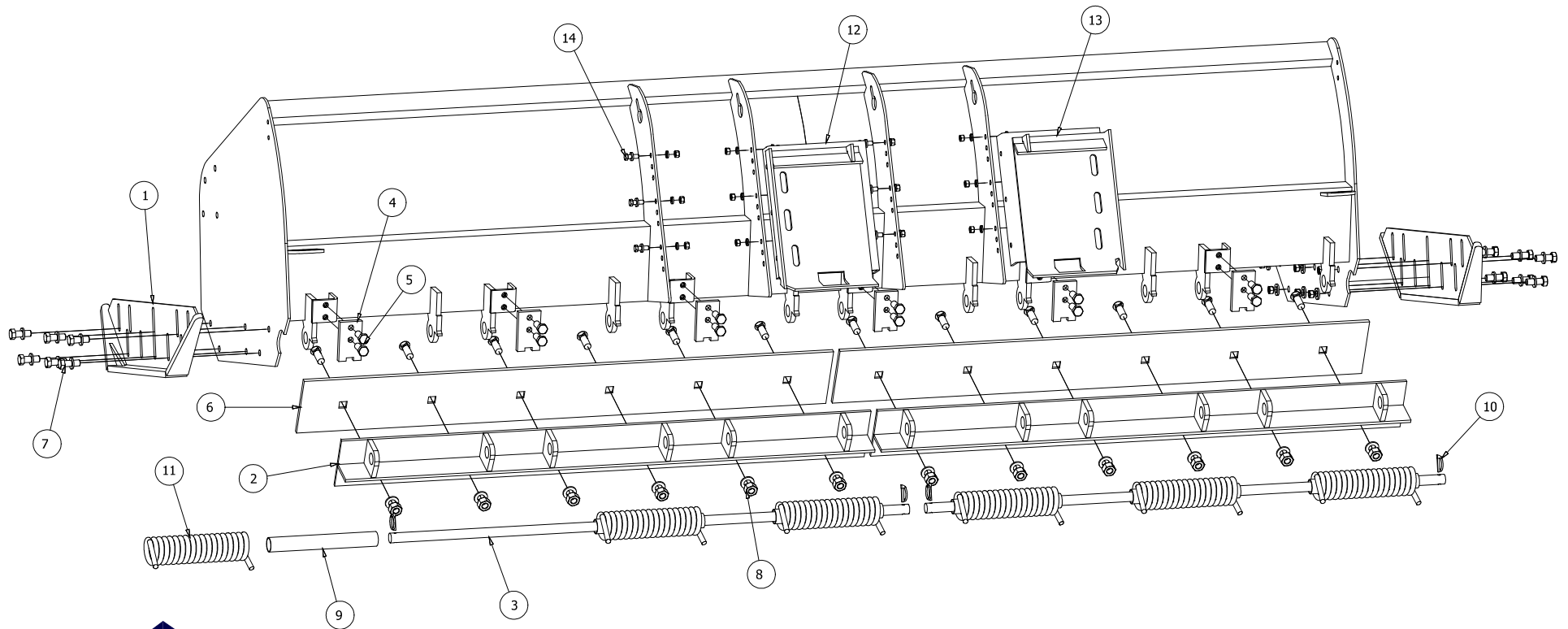


SSAT-XX* Series

Steel Trip Edge Box Plow

Parts List

SSAT-XX REPLACEMENT PARTS LIST			
ITEM	QTY	PART NUMBER	DESCRIPTION
1	2	BAA003	WEAR SHOE
2	2	BAA004-XX	T BAR
3	2	CAA030-XX	TRIP EDGE ROD
4	AS PER LENGTH	CAA020	SPRING PRE-LOAD PLATE
5	AS PER LENGTH	KAA003	SPRING PRE-LOAD PLATE FASTENER KIT
6	2	CAA029-XX	STEEL CUTTING EDGE
7	12	KAA002	WEAR SHOE FASTENER KIT
8	AS PER LENGTH	KAA004	STEEL CUTTING EDGE FASTENER KIT
9	AS PER LENGTH	CAA033	SPRING SLEEVE
10	4	HAA051	LOCK PIN
11	AS PER LENGTH	CAA032	SPRING
12	1	BAA008L	COUPLER PLATE - LEFT
13	1	BAA008R	COUPLER PLATE - RIGHT
14	12	KAA005	COUPLER PLATE FASTENER KIT



LAST UPDATED ON 22.AUG.2006



* SSAT (-XX) SUFFIX DENOTES STANDARD LENGTHS OF 8', 10', 12' AND CUSTOM LENGTHS
E.G.: SSAT-10 DENOTES A 10' SSAT STEEL TRIP EDGE PLOW